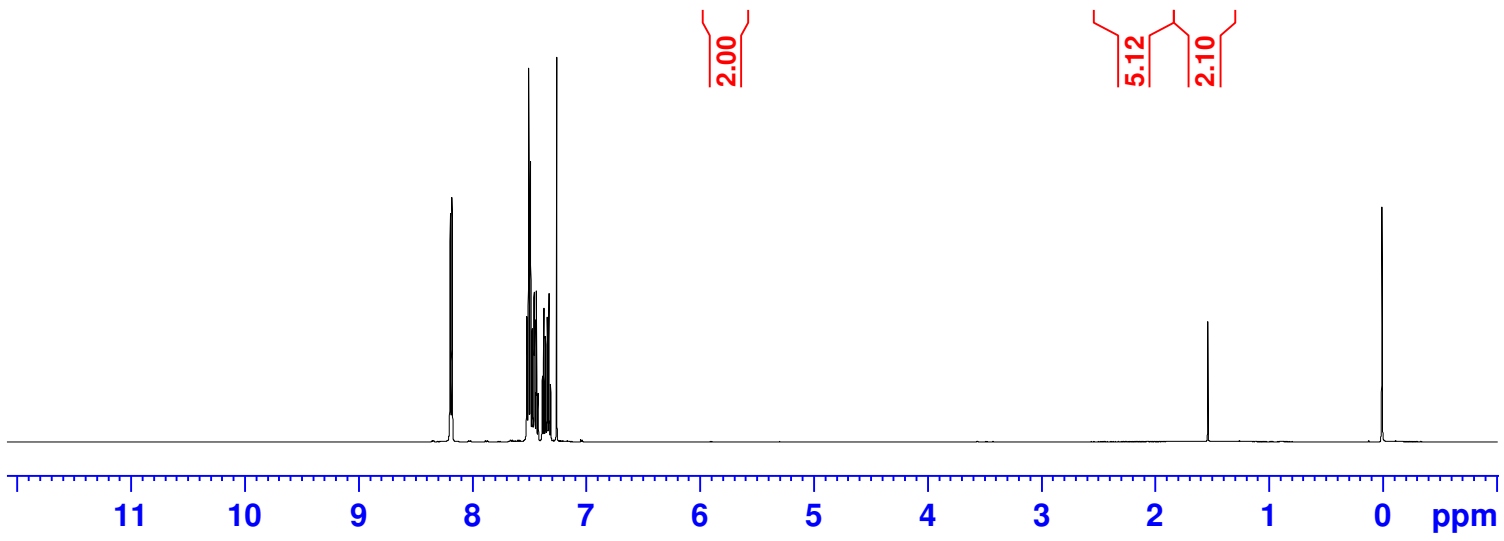
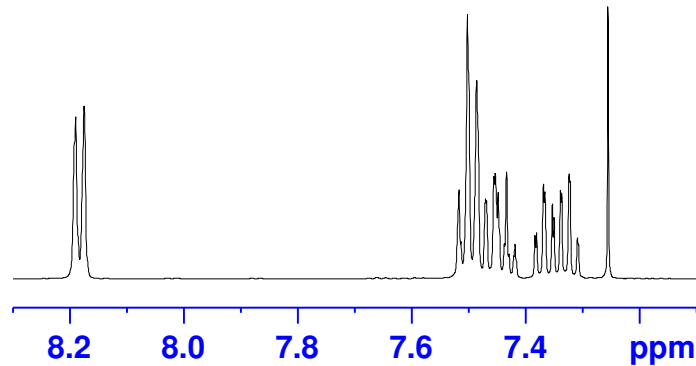
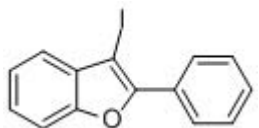


8.192
8.190
8.175
8.175
7.516
7.513
7.502
7.486
7.470
7.468
7.455
7.453
7.448
7.445
7.437
7.433
7.429
7.420
7.418
7.383
7.380
7.368
7.366
7.353
7.350
7.338
7.336
7.323
7.322
7.309
7.307
7.255

— 1.532

— 0.000



Current Data Parameters
 NAME 2_44_H
 EXPNO 1
 PROCNO 1

F2 - Acquisition Parameters
 Date_ 20140421
 Time 15.46
 INSTRUM spect
 PROBHD 5 mm PATXI 1H/
 PULPROG zg
 TD 59998
 SOLVENT CDCl3
 NS 32
 DS 0
 SWH 10000.000 Hz
 FIDRES 0.166672 Hz
 AQ 2.9999001 sec
 RG 196.79
 DW 50.000 usec
 DE 10.00 usec
 TE 296.2 K
 D1 9.00000000 sec
 TD0 1

==== CHANNEL f1 =====
 SFO1 500.1330885 MHz
 NUC1 1H
 P1 8.00 usec
 PLW1 12.19999981 W

F2 - Processing parameters
 SI 65536
 SF 500.1300168 MHz
 WDW EM
 SSB 0
 LB 0.30 Hz
 GB 0
 PC 1.00